

## FIBER ADAPTER PANEL



### Model Number: VSLIU - rrrrrr

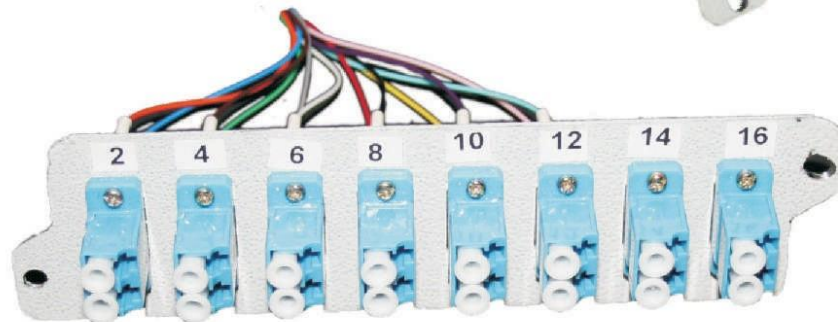
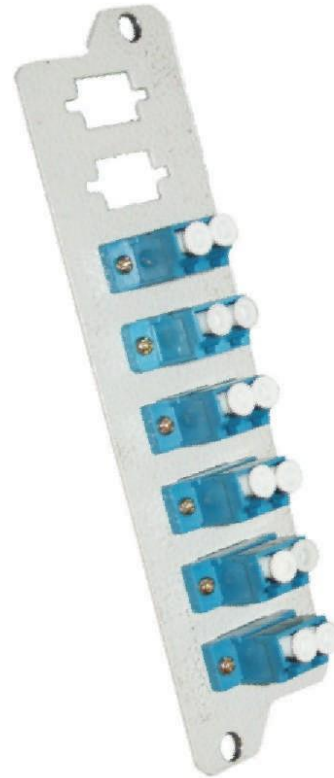
V-ADD offers comprehensive range of loaded adapter panel suitable for various type of L)U/FMS. The panel is pre-loaded with adapters by snap in for easy installation and can be removed easily for future changes & upgradations. All fiber adapter panels can be on the front of fiber optic patch panels, L)U, FMS and enclosures for easy network deployment or adds and changes.

### Features:-

- Cold rolled steel materials.
- Available in max. vz holes a cording to the type of adapters.
- Various type of adapter panel available confirming to L)U and customer's requirement.
- Suitable for FC, LC, SC, ST & Etrrr adapters.
- Comes with suitable screws to fix adapter in panels securely.
- )deal for simple use, adds and changes.
- Ro(S Compliant & )SO {rrs:trsw Certified.

### Applications:-

- )nstallation and management of fiber optic patch cords and pigtails.
- Suitable for L)U, FMS & Patch panel wall cum rack mount.
- (igh-Density fiber optic network application.



# V-ADD

RoHS Compliant ISO 9001:2015 CERTIFIED COMPANY

18, I / III, Hari Kripa, Sector No. 10, Vidhyadhar Nagar, Jaipur (Rajasthan), India, Tel. : 0141-2369560, 2362162  
Email : vadd.v@yaho.com • Website : www.vadd.in